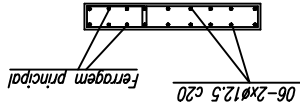


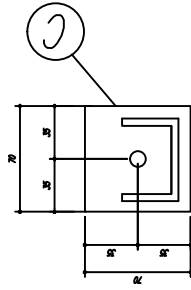
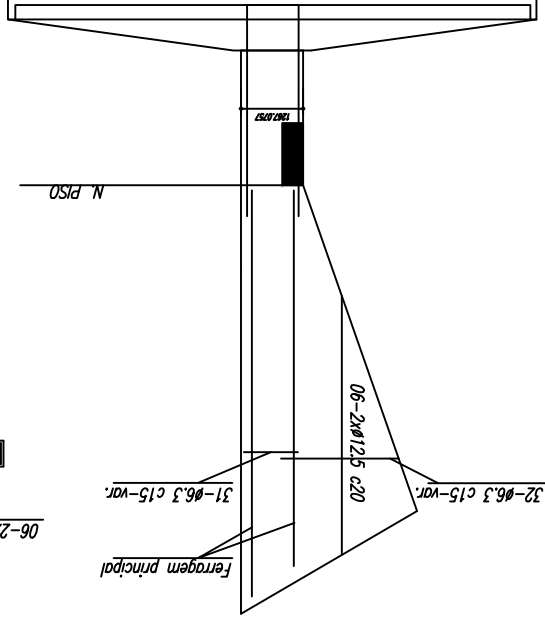
32-Ø6,3 c15-var.
17



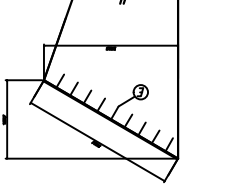
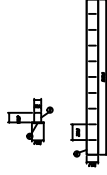
Armcoço Adicional P1 a P7, Puz3 e P25 a P30

sem escada

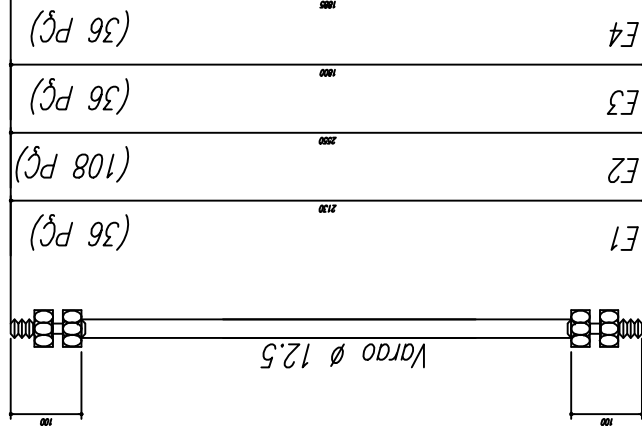
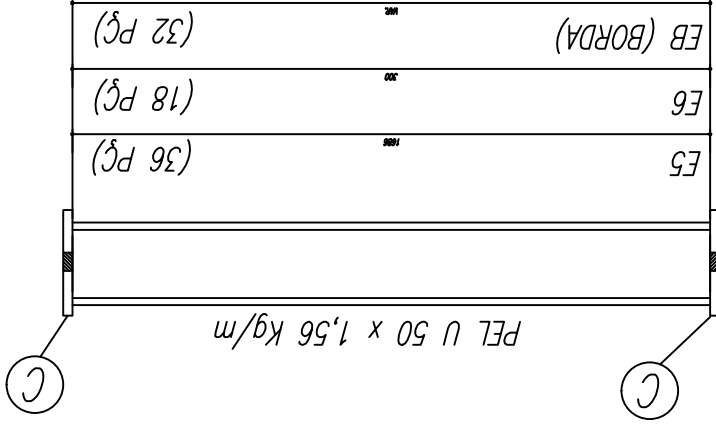
OBS.: Ferroagem principal: ver no detalhamento individual de cada pilar acima.



CHAPA DE RES. 20 20x20
3mm esp.



ESPAÇADORES E1 A E4



QUADRA COBERTA

DATA: DEZEMBRO 2019 ESCALA: 1/150

Proprietário: Prefeitura Municipal - Vimar Zimmermann

Responsável Técnico: Jamile Storch - CREA 219831

ESTADO DO RIO GRANDE DO SUL
PREFEITURA MUNICIPAL DE AUGUSTO PESTANA

Rua da República, 96.
Júli- RS - 98740-000
Telefone : 55.3334.4900

PROJETO
ESTRUTURAL

DETALHE DAS PEÇAS

30